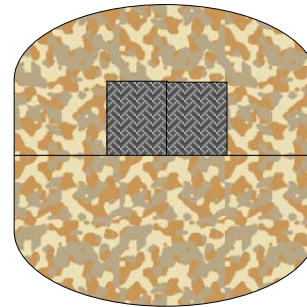
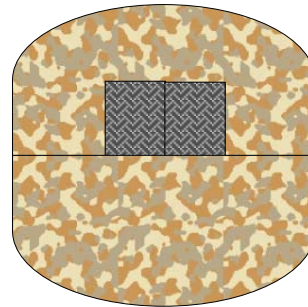
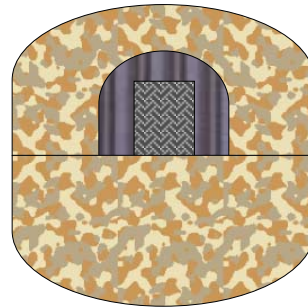
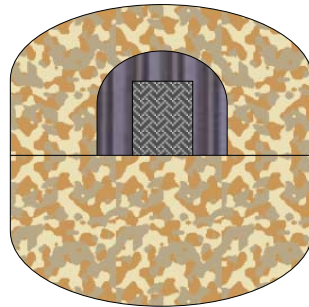
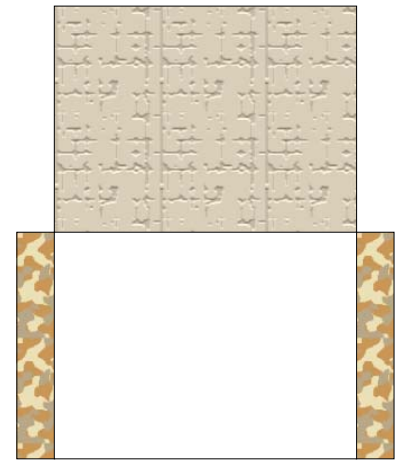
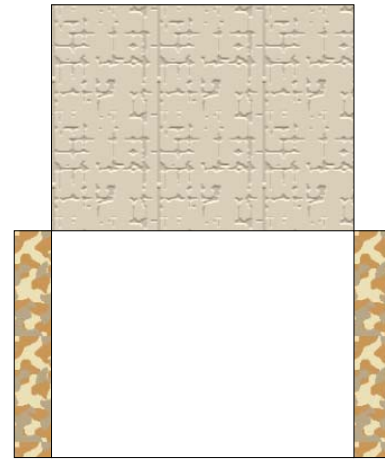
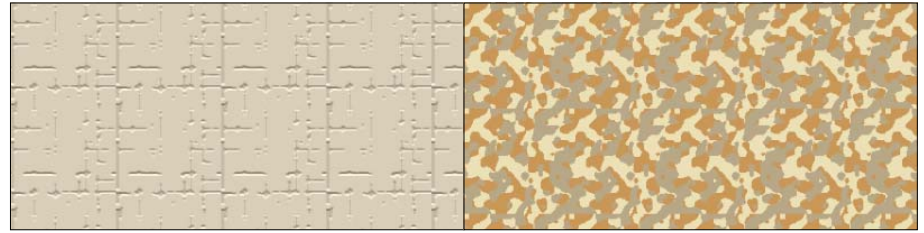
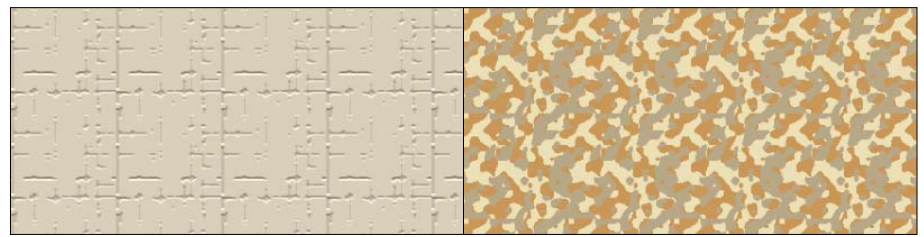


Hanger Base
 Fold and stick together
 Same as Roof

Side tab will hold base edges
 Of Hanger Roof



Small Hangers
 Made same as large
 One.
 End pieces fold
 Together, & stick on
 front of arch if
 Desired.

Hanger Roof
 Fold and stick together



Tip! When glue is dry bend around
 something round to get a smooth
 Arch.

Desert Hanger Set

Sheet 1 of 1

www.germy.co.uk

