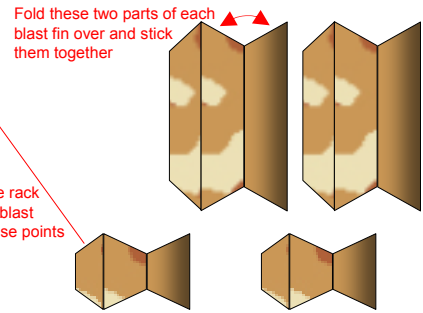
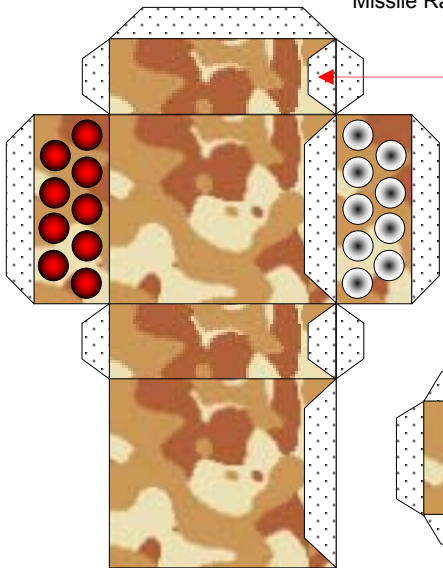
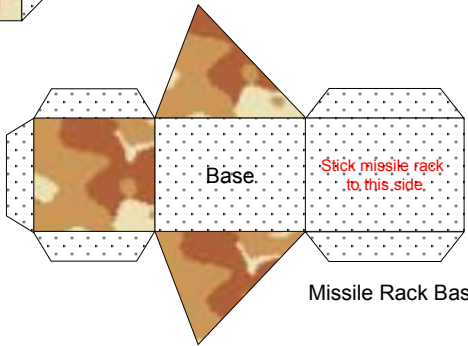


Missile Rack



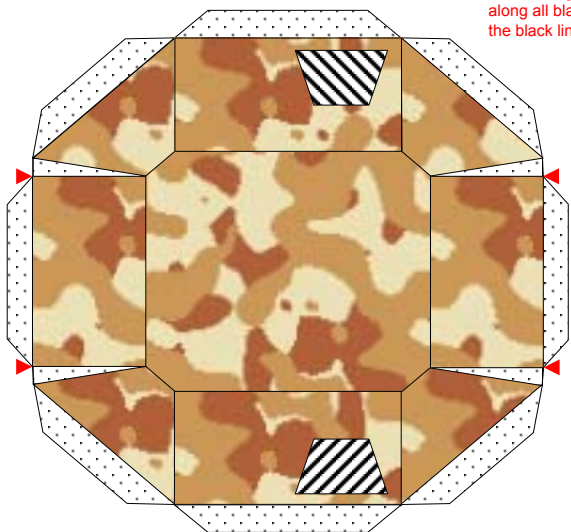
Once missile rack is built stick blast fins onto these points



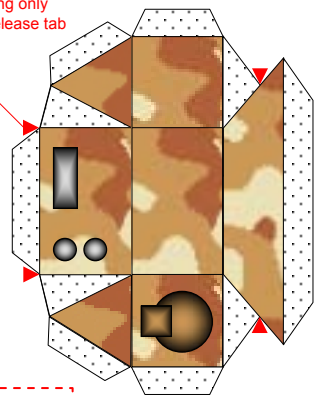
Missile Rack Base

Stick missile rack to this side

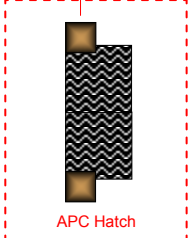
After cutting out parts and scoring along all black lines cut along only the black lines marked to release tab



Hover Skirt



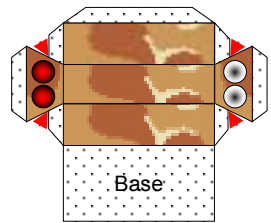
Missile Cockpit



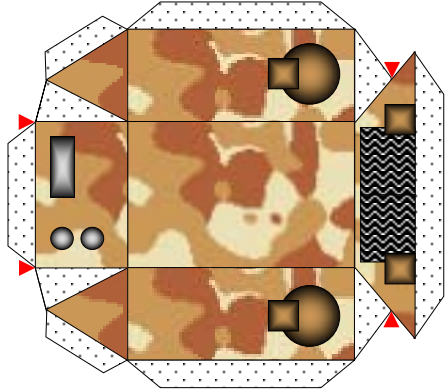
APC Hatch

Stick the APC hatch to the rear panel of the hover skirt to match up with the hatch on the APC hull

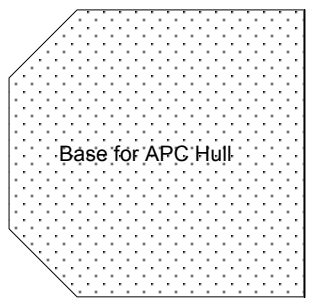
APC Hull alternative to Use with Hover Skirt



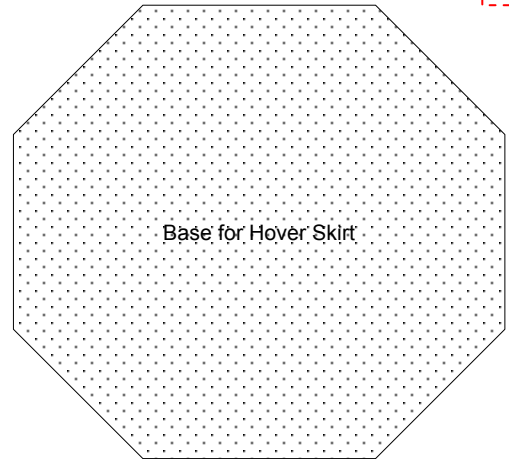
APC Missile Launcher



APC Hull



Base for APC Hull

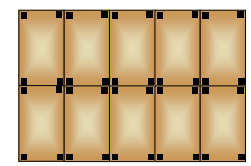


Base for Hover Skirt



Base for Missile Cockpit

Missile Tank / APC 15mm Model Available Free from Germ's World www.germy.co.uk



Reactive Armour Panels and other decoration

